

# Kjellander Sjöberg

Hope from Wood  
Discussion Series



**Adaptive use - how to use the already built as a resource?**

**Who are we?**

**Kjellander Sjöberg was founded in 1998 and is a medium-sized architectural practice with an international diverse and dedicated team led by partners: Mi Inkinen, Ola Kjellander and Stefan Sjöberg. KS operates out of Stockholm, Malmö and London, vibrant cities where we are part of ongoing transformations to improve and create new liveable places. We work on every scale to support people's daily life and generate rich, green urban experiences.**

**We are driven by developing sustainable projects that meet the challenges of climate change and make meaningful use of resources, that tell a story of life, content, interaction, local neighbourhoods and society. We base all our work on a collaborative approach and dialogue, to create urban areas, buildings and landscapes that actively contribute to shaping a better future.**

**Every KS project  
tells the story of its  
essential elements:  
Life, Society, Fabric,  
Form, Environment**

**We generally say that all cities have a soul. Or rather have a logic based on their individual parts and characters. We call this urban fabric; a clear organisation or structure.**

**The built form that is usually a response to local conditions and historic evolution; to climate, culture, economy and agreements; a response to rules. Our role as architects (still a word full of promise) is to try to understand, repair and improve. To expand on.**

# Transformation



# Gjuteriet



## Gjuteriet

Located in the Varvsstaden district, a new sustainable neighbourhood in Malmö, Gjuteriet is to be transformed into an innovative, open public meeting place. The historical building represents the foundation for what will become a contemporary and versatile work environment, reinterpreting the original scale and the former shipbuilding industry into a vibrant creative hub. The transformation fills Gjuteriet, a significant building with strikingly robust character, with new unexpected spatial experiences and proposes a flexible structure in the long term. The design activates the surroundings and utilizes the unique location by the shipyard's inner basin, the quay, and the adjacent dry dock. It introduces new connections and places public activities on the ground floor, supporting the development of the emerging city life.

## Project Details

Programme: Workplace, Restaurant, Café

Status: Ongoing

Year: 2019-2023, on site 2020

Site: Varvsstaden, Malmö

Client: Varvsstaden

Contractor: PEAB

Size: 6030 sq m

Collaboration: Sted Landskap, BK Konsult, Matter by Brix

Tenant: Oatly

Partner in charge: Stefan Sjöberg

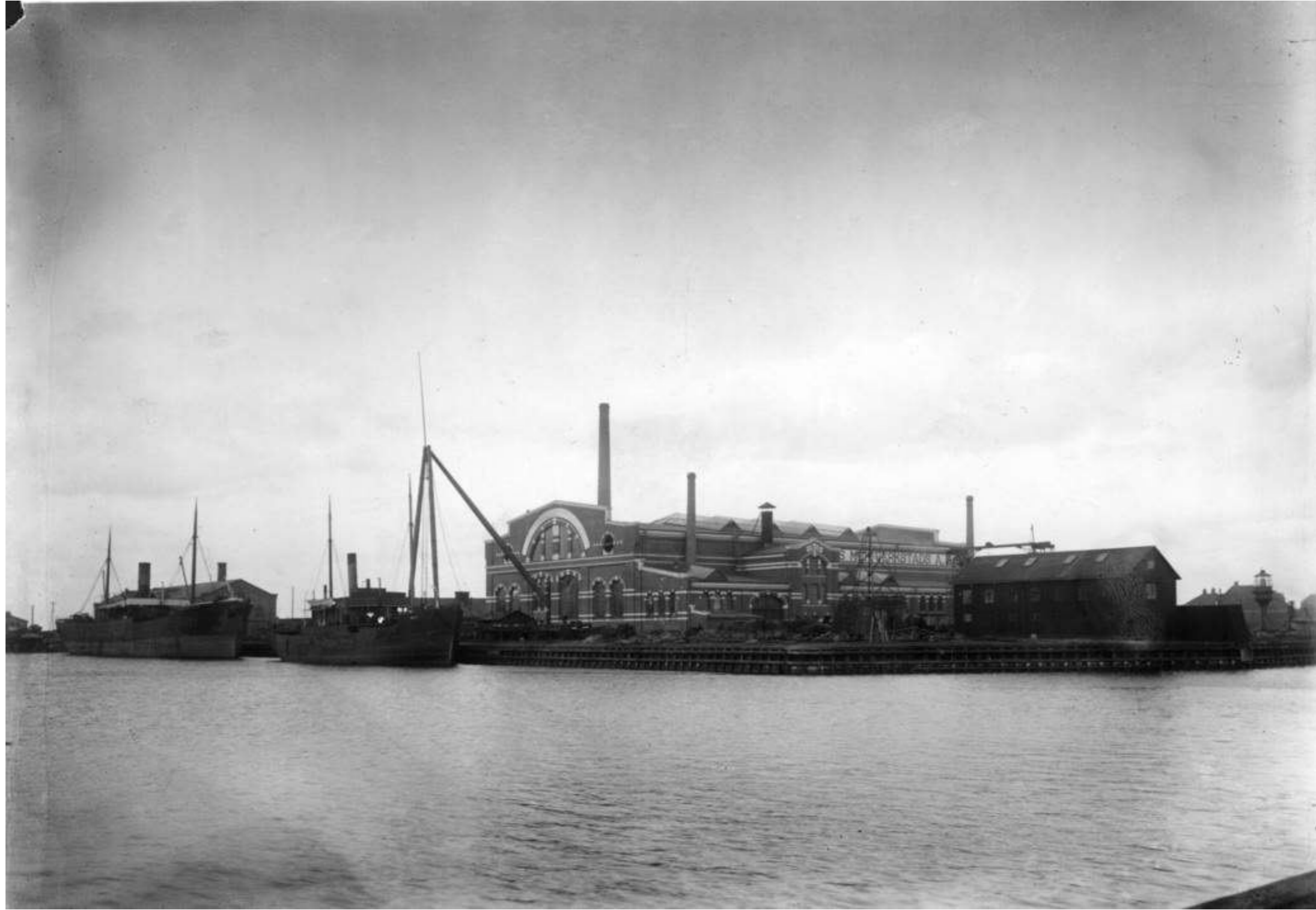
Team: Johan Pitura, Hannes Haak, Sylvia Neiglick, Simon Estié,

Sebastian Mardi, Per Hedefält, Michael Westerlund, Susanna

Bremberg, Stefan Rydin, Karin Lindström

Photo: Petra Bindel

Images: Engram

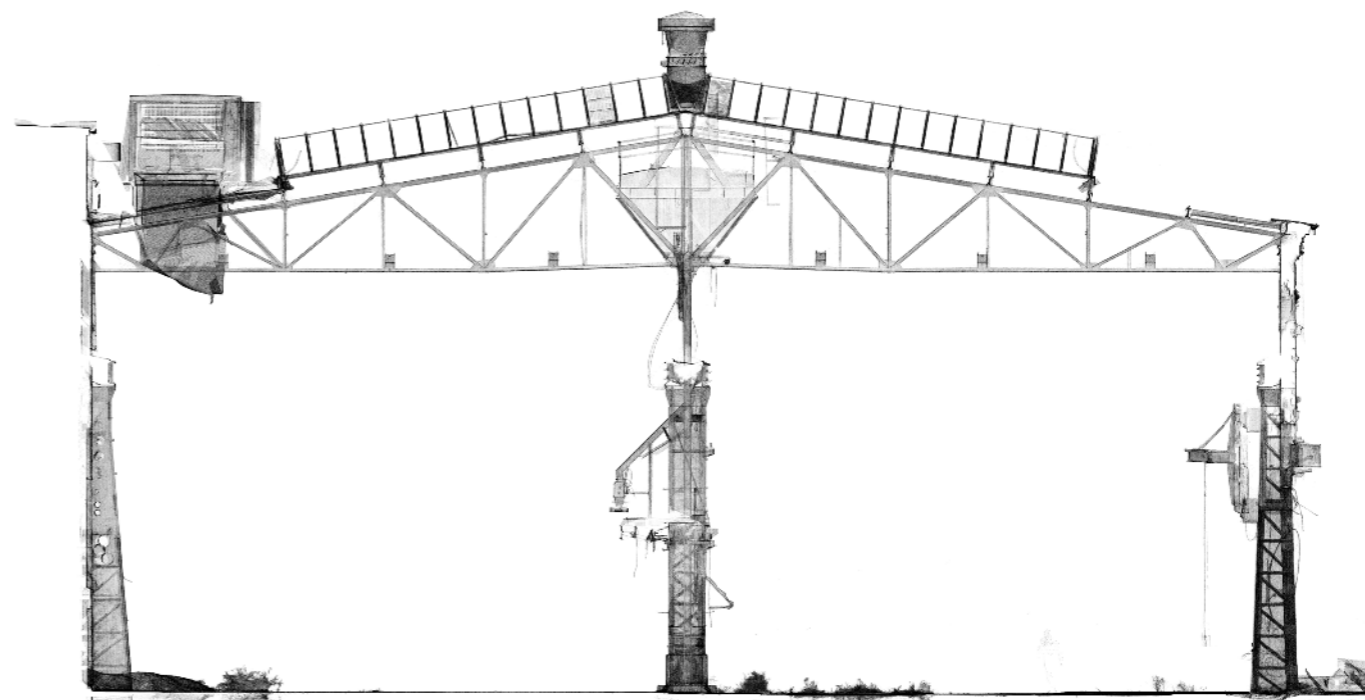
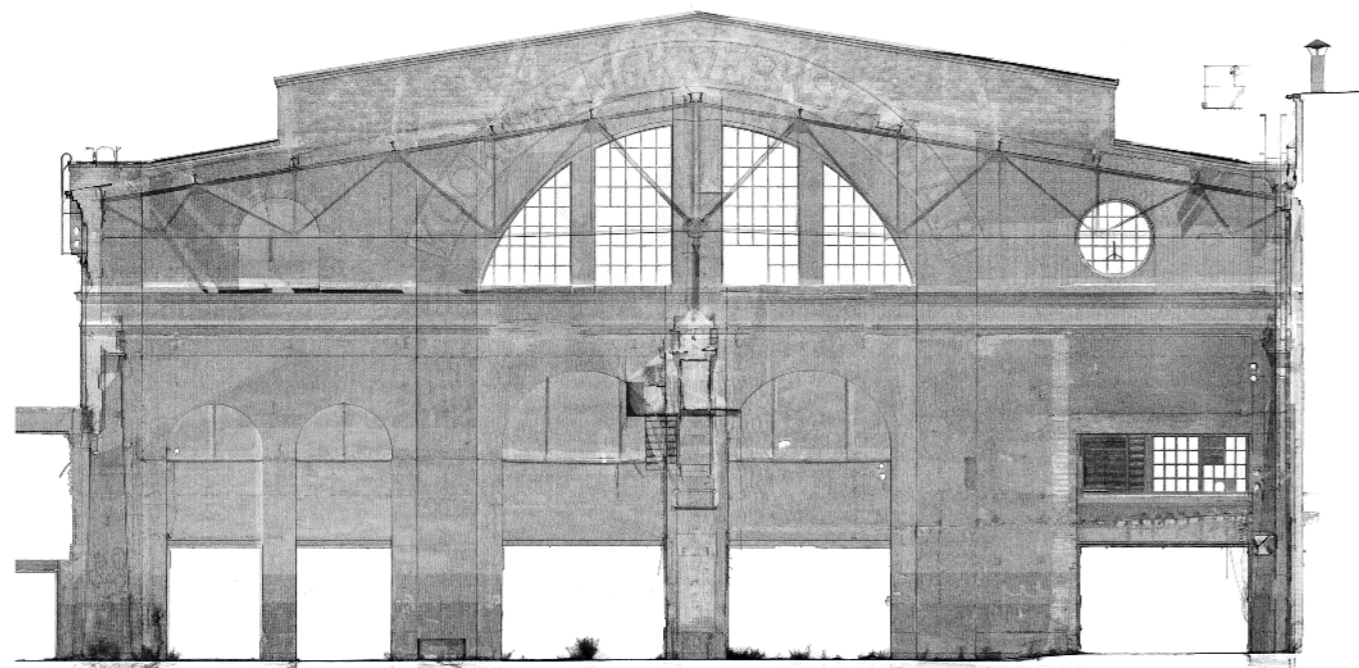








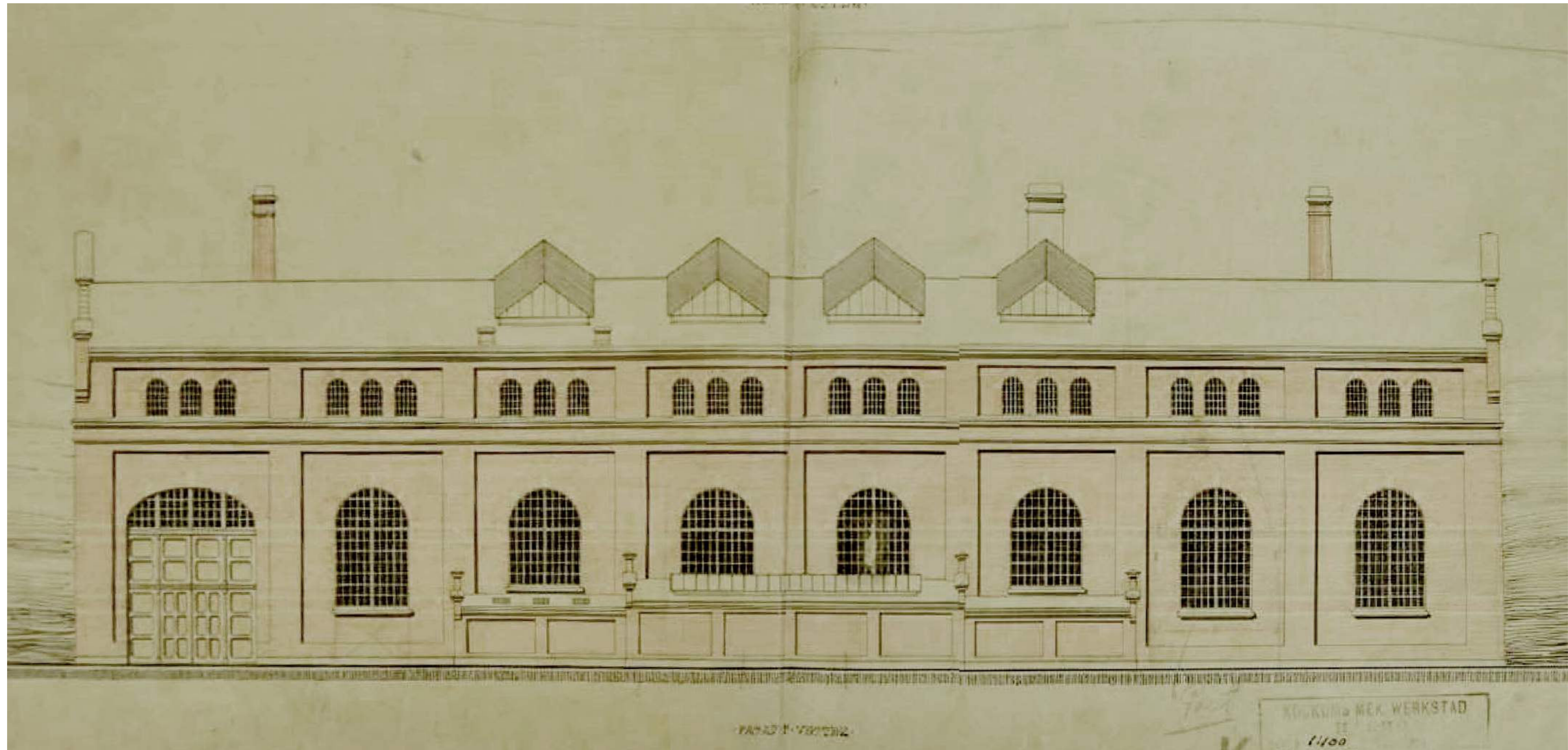












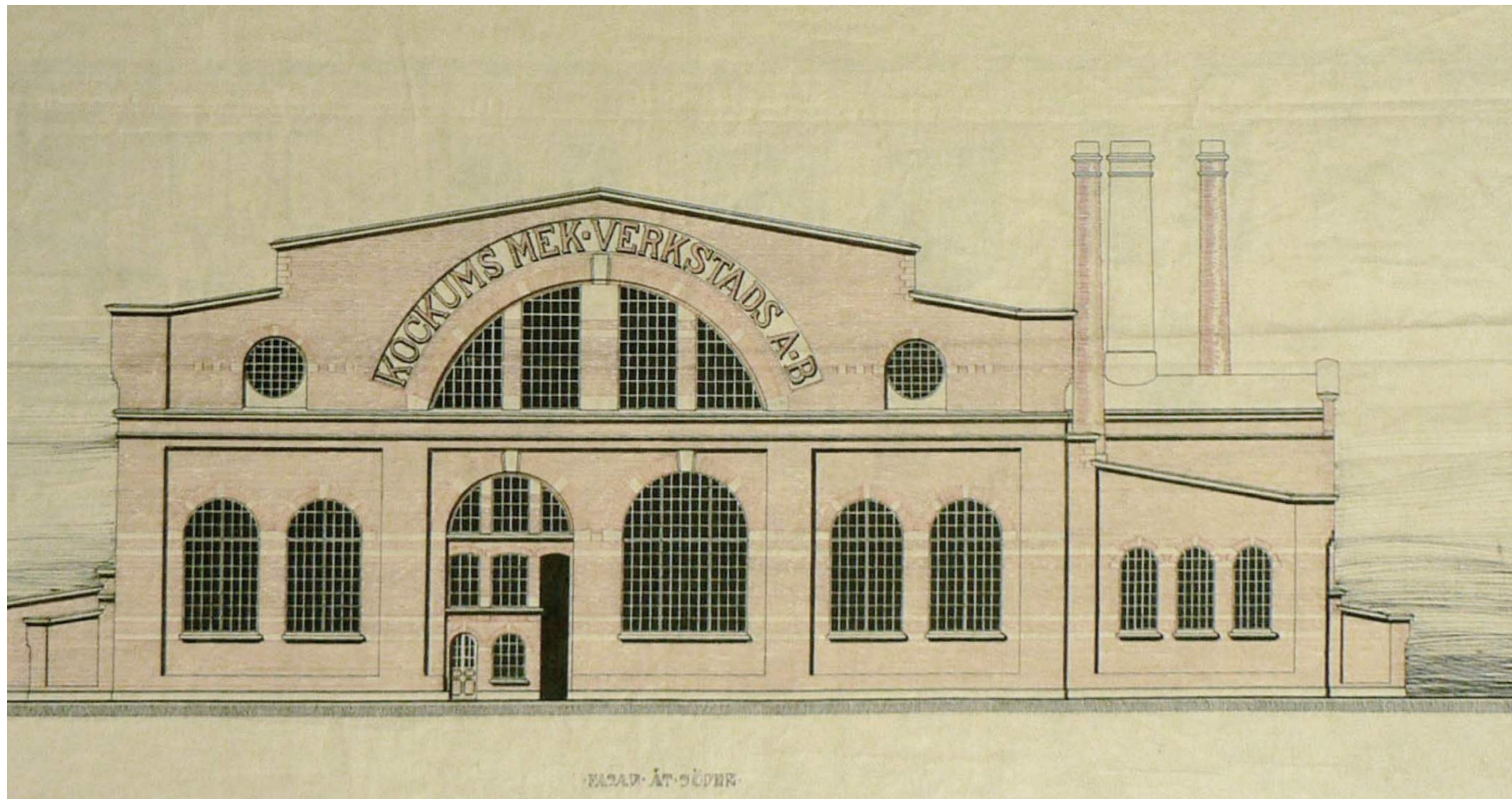
PLAT 1. VESTGÅRD

KÖNIGL. MEK. WERKSTAD  
1/100







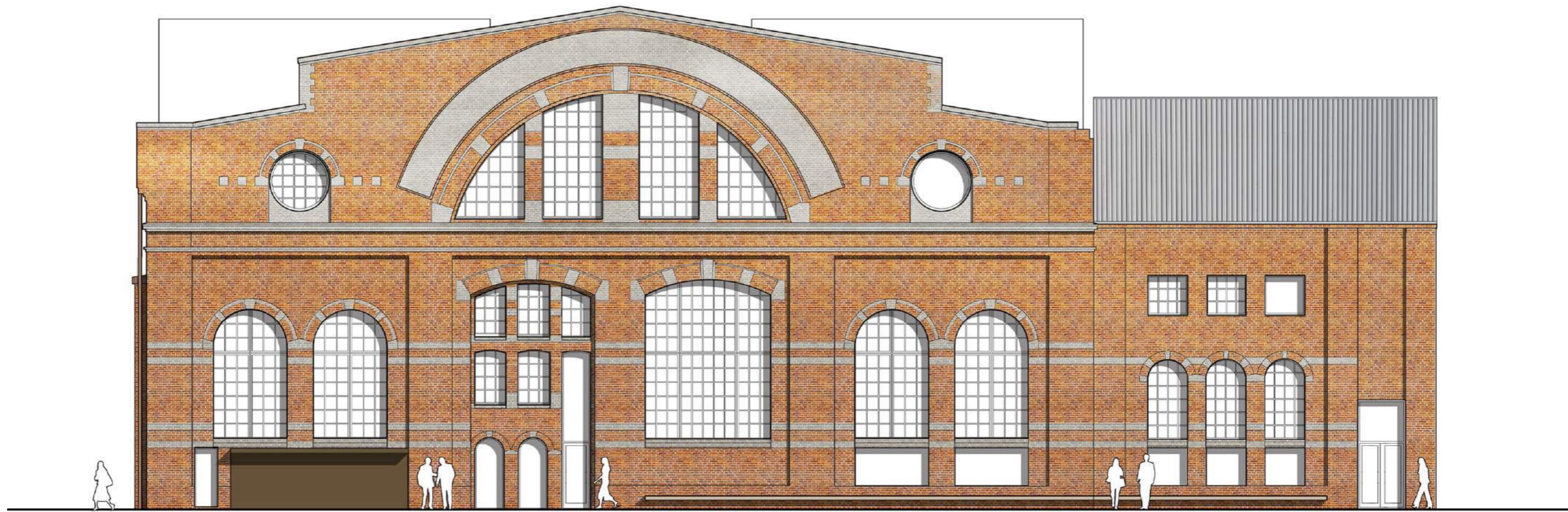


KOCKUMS MEK-VERKSTADS A.B.

FACAD-ÅT-SÖDER

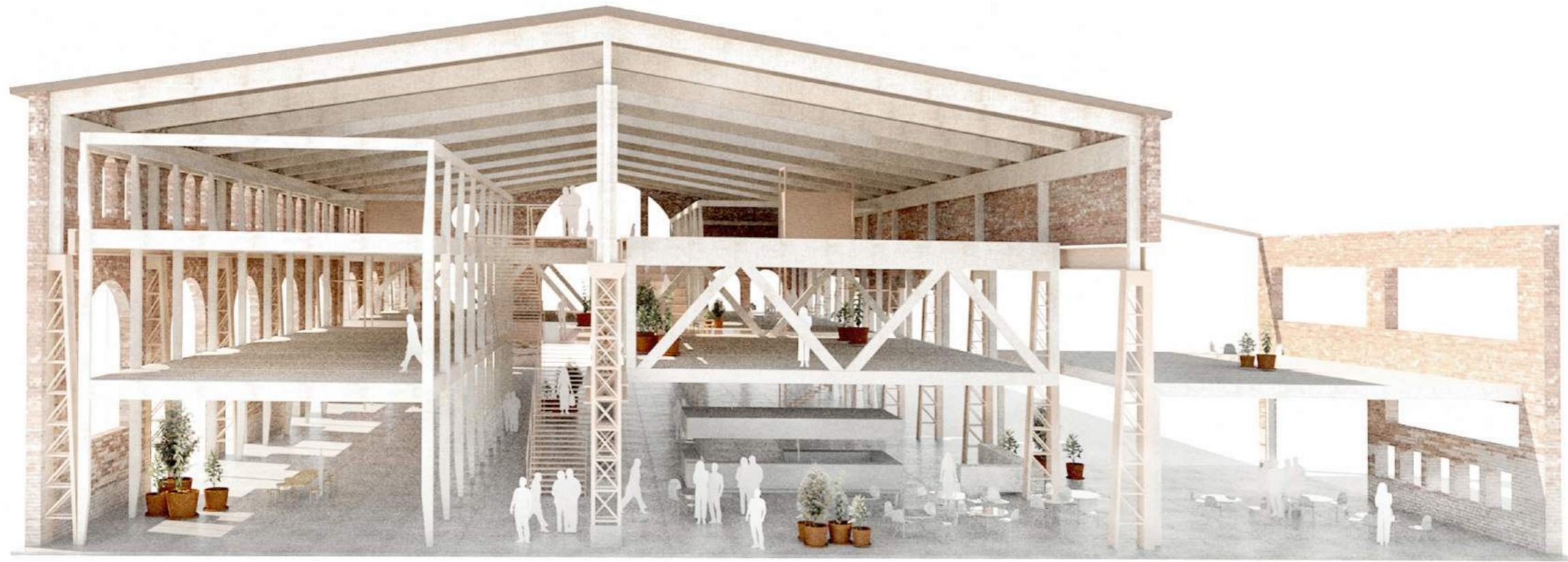


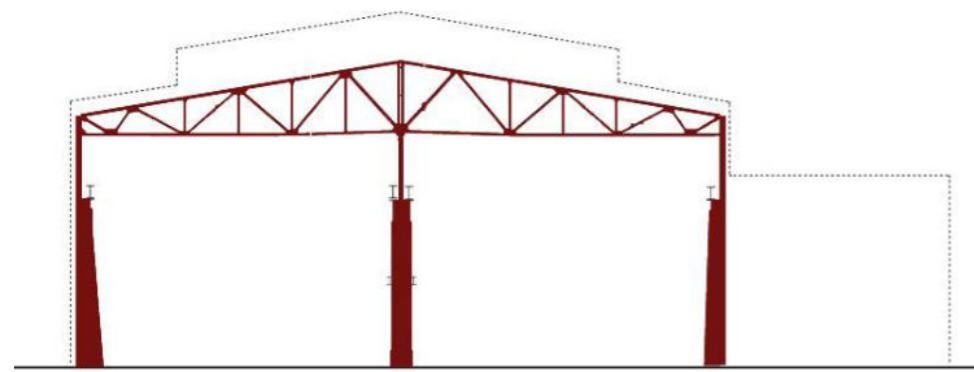




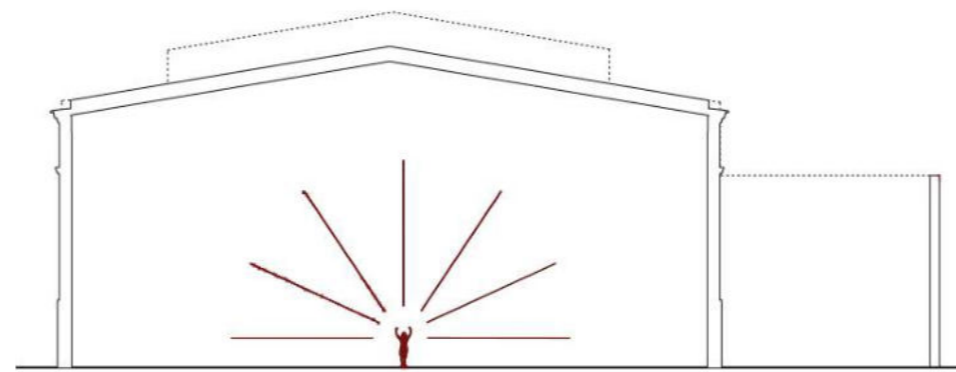




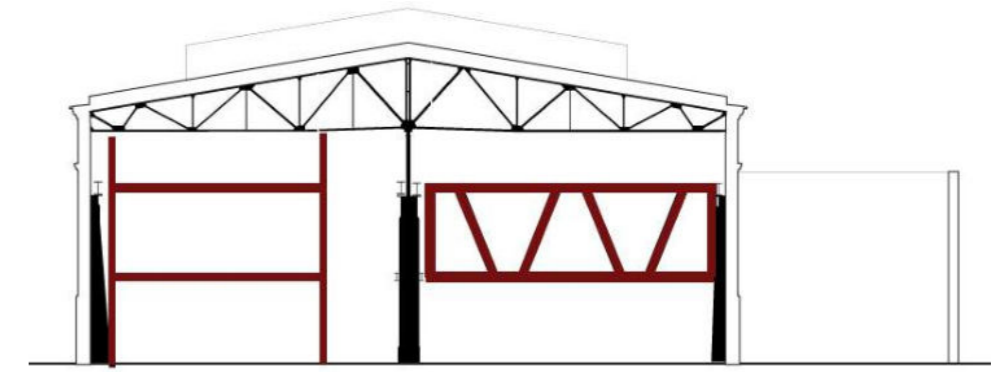




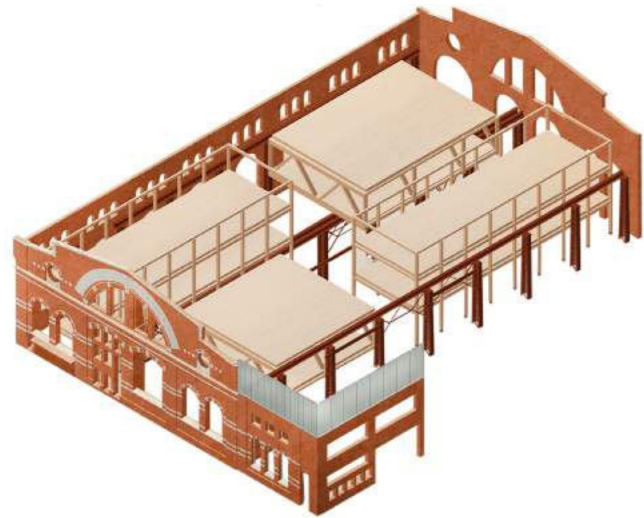
Structure and materiality preserved



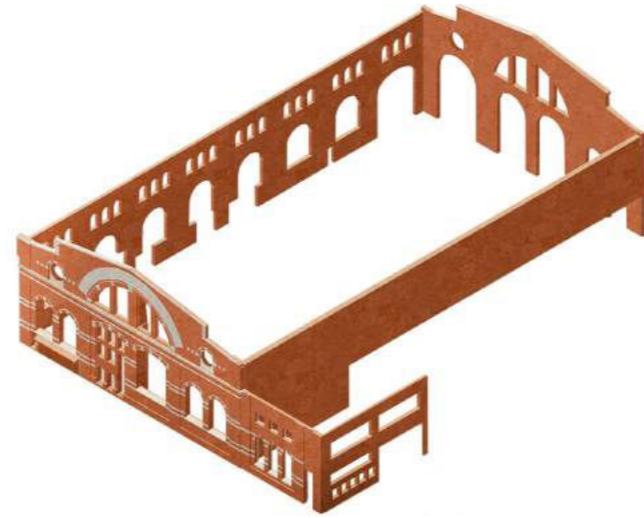
Generous spatiality



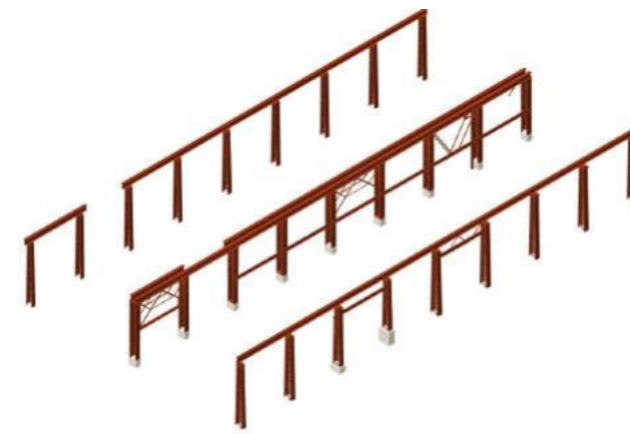
Gjuteriet with platforms



1. Architectural concept



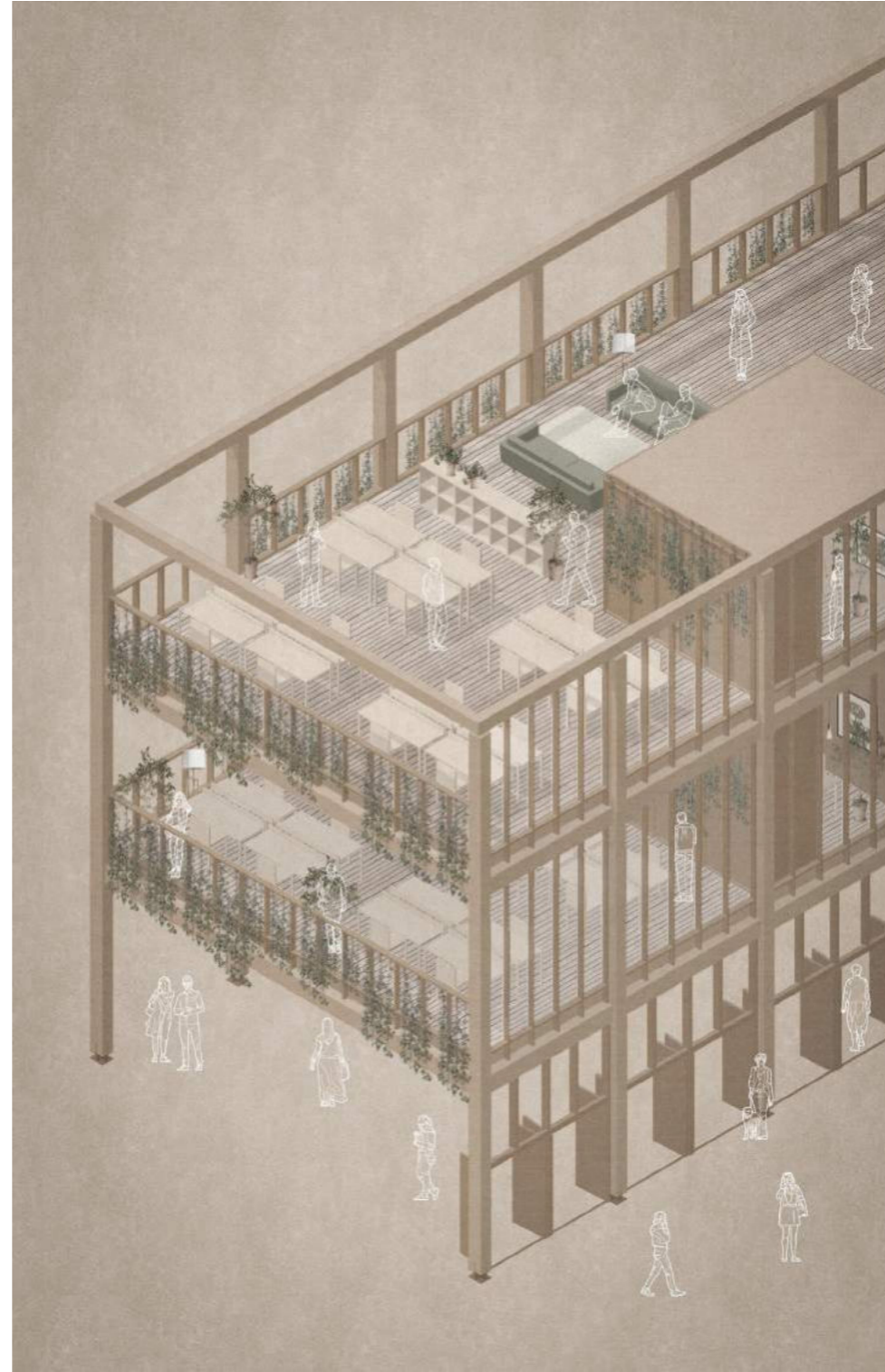
2. The eroded brick walls



3. Existing loadbearing steel frame



4. Added timber structures







**THE ORIGINAL**

**OAT-  
LY!**



**WE  
SUCK.**



**TOPIC OF THE SHOW:**

**IT'S LATE  
AGAIN AND  
WORSE  
THAN EVER!**



**SUSTAIN-  
ABILITY  
REPORT**



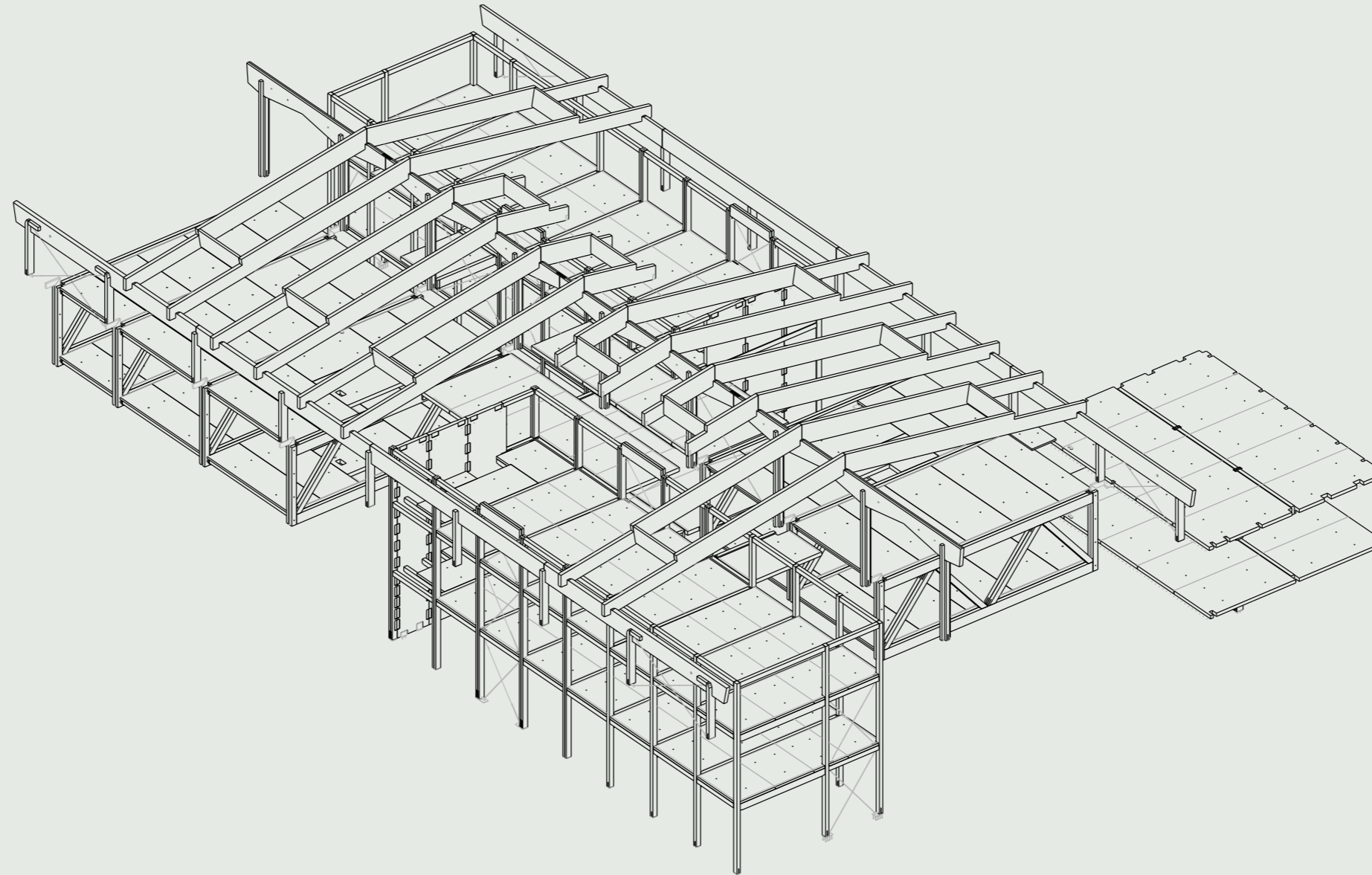




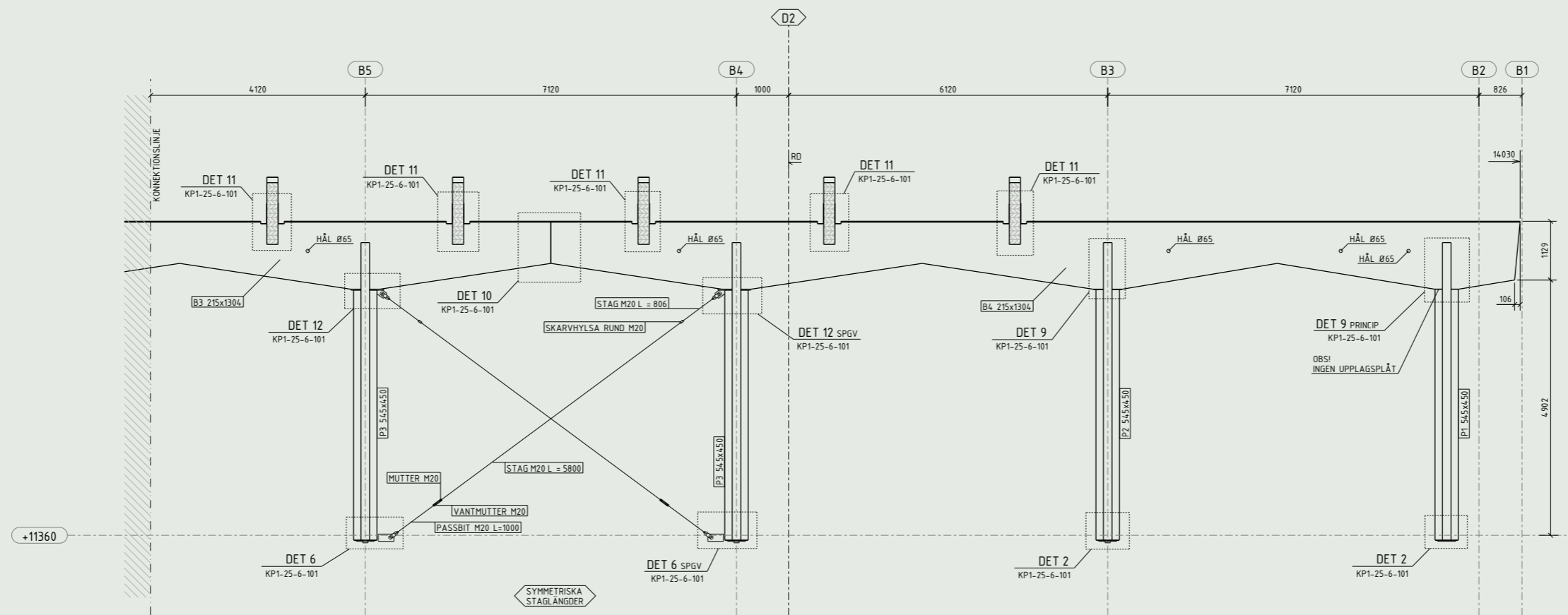




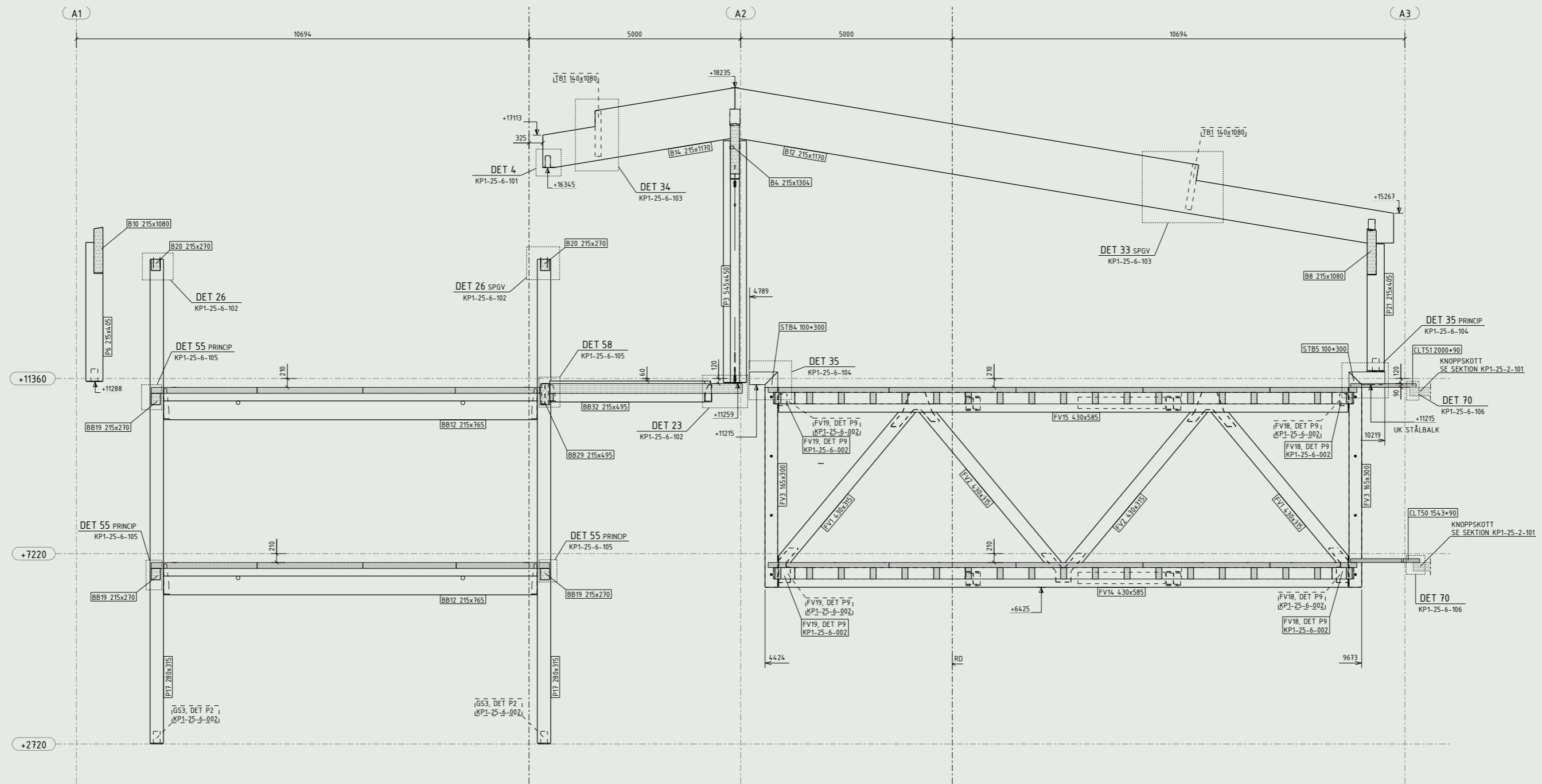








SEKTION TAKSTOMME - LINJE A2 - DEL 2  
1:50



SEKTION - LINJE B4  
1:50











**Thank you!**

